

Developing
fully-devoted followers
of Jesus Christ
along life's journey.

Dear Church Family,

Our mission at Cross View, based on Christ's Great Commission, is to develop fully-devoted followers of Jesus Christ along life's journey. Our mission is all about teaching and sharing the saving message of the Gospel with people. Our Lord has entrusted us with a beautiful campus in Edina to serve as an equipping station to help accomplish that mission.

The church has always been about people, not about brick and mortar. The buildings, classrooms, and meeting spaces of Cross View are more than just places to gather. Our facility is a tool that enables us to make disciples. It provides places for people of all ages to learn about the Savior's deep love for them and to be equipped to live out His servant-way. Almost every day of the week, people gather at Cross View to be equipped through the study of the Bible to be the hands and the feet of Jesus wherever He has planted them in the community and in the world.

We give thanks and praise to God that we are outgrowing our current facility. This is a blessed sign that the Spirit of God is doing mighty work among us. Our classrooms for children, youth, and adults are full and our hallways are so crowded that it makes it difficult to create a great first impression for our visitors. But more importantly, we have had to postpone many opportunities for mission and ministry to one another and to the community because we simply don't have the space to carry it out.

This building project is ultimately about the saving of souls through the proclamation of the Gospel. It is about staying true to Christ's Great Commission. Just as those faithful followers of old joyfully made many sacrifices on an eternal investment, we are called to do the same as we continue to expand our missional footprint for the sake of our current membership, but even more for the sake of those in our community and world who have yet to know the Good News of Jesus Christ.

It warms my heart that this congregation is excited to join together in this campaign to expand our missional footprint. I have been praying for this opportunity for many years. I ask you now to please pray intently and often, asking God how you can share a sacrificial gift to impact the work in His kingdom through our **Cross View 4.0 – Building for Generations** campaign.

In His Grace,



Steve Wheeler
Senior Pastor





Our mission at Cross View is to develop disciples of Christ by growing both wider and deeper. Wider by touching more souls with the life-saving good news of the Gospel, and deeper in our continual learning and understanding of God's purpose for our lives in His kingdom. Cross View has a pattern of growth—from the initial build in 1968, to the addition of the Early Childhood Center in 1986, and then to the expansion of both the church and the school in 1993—we have been building for generations.

Now, we are bursting at the seams once again:

- Every available room in the building is full of children and adults during the education hour, leaving no space for additional classes or comfortable fellowship.
- The existing Youth Group Room is half the size needed to accommodate upcoming classes.
- There has been a waiting list to enroll in the Early Childhood Center for many years.
- We have been unable to host community events given our current design and limited space.

We are ready to start our second half-century with the fourth generation of our Cross View campus—**Cross View 4.0!**

Please consider how you can leave your legacy by contributing towards this project to meet our current needs for all generations across the lifespan and also stay true to the Great Commission to reach future generations both near and far.

Help us in **Building for Generations!**

CROSS Building for

MEETING OUR MEMBERSHIP NEEDS

CHILDREN

With a focus on safety and protection, the changes related to the Early Childhood Center (ECC) will result in a completely secured entity for ECC children within the church building. The children will have a dedicated play space on their lower level. New swinging gates in the driveway will block traffic from the crosswalk leading to/from the playground whenever that is needed. The ECC entrance will be moved to a safer drop-off location with the Director's office appropriately situated next to the entry, and the existing office space will be converted into classroom space to increase enrollment.

Children will also benefit from a new registration area, additional classrooms, and new gathering spaces to kick-off Sunday School each week.

YOUTH

Sr. High and Jr. High Youth will each have their own spacious, comfortable, dedicated classroom designed to accommodate our upcoming class sizes, with room for future growth. In addition, a third large space will serve as a shared activity room for the youth. The flexible Multi-Purpose Room will be used for a variety of youth-inspired ministries, including indoor activities, servant events, hosting multi-congregational youth gatherings, etc.

ADULTS & YOUNG FAMILIES

An enhanced, larger, more comfortable narthex will greatly alleviate congestion and provide a more welcoming atmosphere for members and visitors. Both small and large sitting areas and a coffee bar are planned for relaxed fellowship. A new, spacious nursery on the sanctuary level provides



more visible access to childcare during church services and provides a space for nursery services during other events. The existing Fellowship Hall will be dedicated for adult education and activities (instead of having to reset the space after sharing it with the ECC). A new family restroom will provide privacy for parents with young children.

SENIORS

Many aspects of the proposed building plan are designed with open and easy access in mind. By securing the ECC in the lower level and adding a second kitchen in the Multi-Purpose Room, the church can be open for daytime activities, offering options for daytime coffee, luncheons, or classes, and a large space for a variety of service activities. There will also be convenient drop-off areas; a new, more convenient elevator; a private, accessible restroom; and more seating by the exits to wait for a pick-up.



VIEW 4.0

Generations!



STAYING TRUE TO THE GREAT COMMISSION – EXTENDING OUR REACH

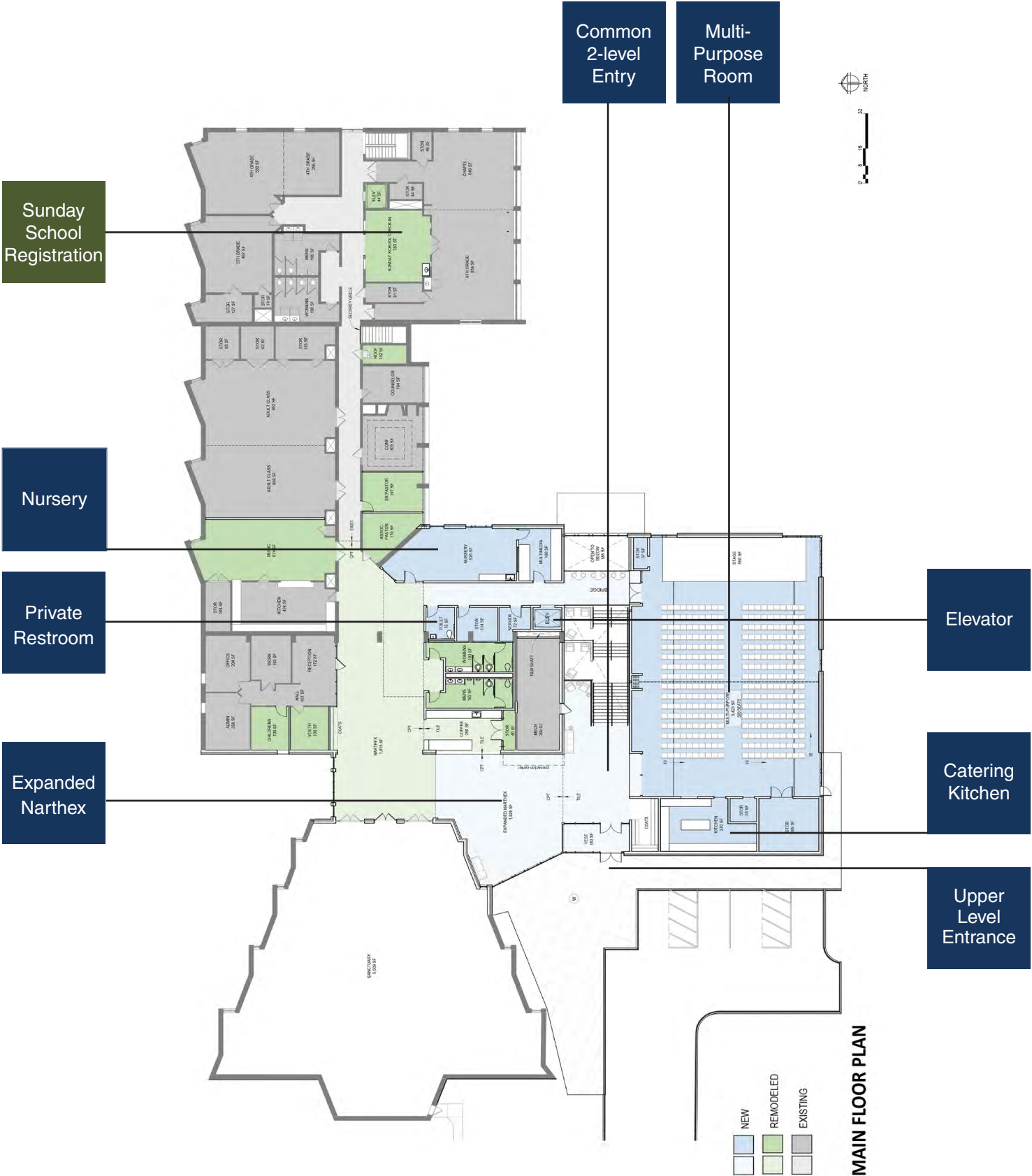
A key feature of the expanded building design, intended to position Cross View as a welcoming partner in the community, is the new Multi-Purpose Room, which includes its own catering kitchen (eliminating conflicts with the current kitchen that is used daily to prepare meals for the ECC children).

Designed for flexibility and with capacity for up to 320 seats, the Multi-Purpose Room can be used for a large variety of activities and community events that our current building cannot accommodate. This new space is envisioned to be used for:

- Outreach events such as EasterFest, Children's Nativity, and Oktoberfest, now with protection from the weather
- Community meetings and events, such as Mothers of Preschoolers (MOPS), Boys or Girls Scouts, family gatherings, etc.
- District church meetings or events
- Concerts or seminars, possibly streamed online
- Bible Study Fellowship (BSF)
- Workshops on parenting, marriage, financial planning, a Biblical Worldview Series for parents and their high school seniors, etc.
- Larger fellowship space for wedding receptions or funeral luncheons



Main Floor

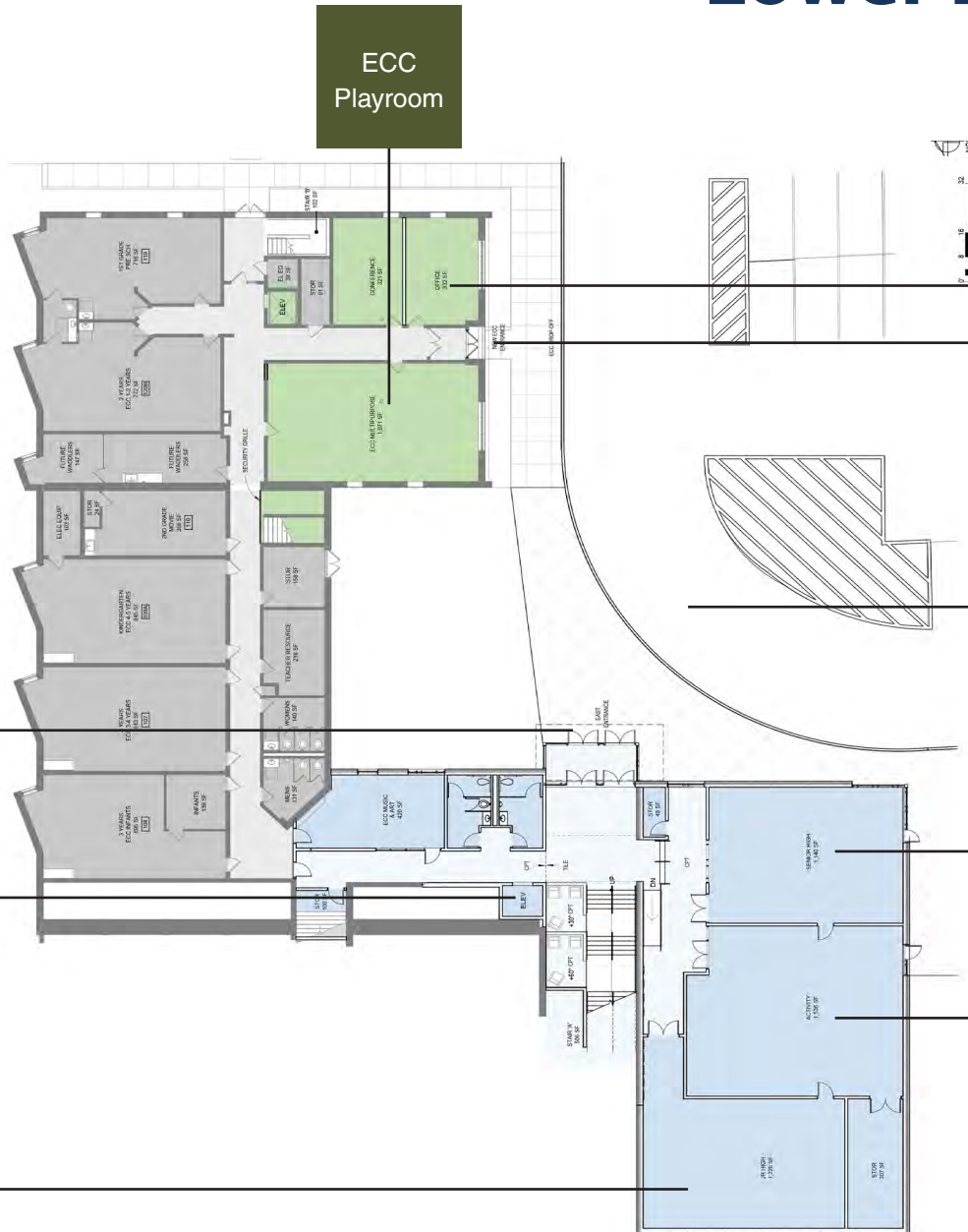


The site plan shows a building footprint with several rooms labeled with their areas in square feet. The rooms include:

- SR. HIGH YOUTH CLASSROOM: 1,442 SF
- ACTIVITY: 1,500 SF
- YOUTH ACTIVITY SPACE: 1,200 SF
- YOUTH ACTIVITY SPACE: 1,200 SF
- YOUTH ACTIVITY SPACE: 1,200 SF

Callouts point to specific features:

- ECC Office by Entrance**: Points to the top right corner of the building footprint.
- ECC Entrance**: Points to the top left corner of the building footprint.
- Close Lower-Level Vehicle Access**: Points to the bottom left corner of the building footprint.
- Sr. High Youth Classroom**: Points to the top right room (1,442 SF).
- Youth Activity Space**: Points to the bottom right room (1,200 SF).



LOWER LEVEL FLOOR PLAN

	NEW	REMODELED	EXISTING
1. Single-Family Detached	100	100	100
2. Single-Family Attached	100	100	100
3. Multi-Family (2-4 Units)	100	100	100
4. Multi-Family (5-9 Units)	100	100	100
5. Multi-Family (10-19 Units)	100	100	100
6. Multi-Family (20-49 Units)	100	100	100
7. Multi-Family (50-99 Units)	100	100	100
8. Multi-Family (100+ Units)	100	100	100
9. Commercial/Industrial	100	100	100
10. Public Works	100	100	100
11. Other	100	100	100

Project Summary

Total Project (estimated)	\$6,000,000
Less Mortgage	(\$2,000,000)
Campaign Minimum (includes \$1M lead gift)	\$4,000,000





Determining How Much To Give

Paul wrote to the Corinthian believers that “Each one must give as he has decided in his heart to give, not reluctantly or under compulsion, for God loves a cheerful giver” (2 Corinthians 9:7).

Here are five steps to help you decide how you may give:

1. Pray

“If any of you lacks wisdom, let him ask God” (James 1:5). Sacrificial giving is a spiritual decision. Ask God to stretch your faith, so that you can excel in the grace of giving (2 Corinthians 8:7). As you pray, God will give you peace about how much He wants you to give.

2. Don’t rush your decision

Spend time listening to God’s still, small voice in your heart. Ask God to reveal to you “how much” He wants you to give and “how” He wants you to give.

3. Have a family conference

Be sure to involve your children. This is a great opportunity to teach generosity and faith.

Read the following passages and discuss what you learn: Proverbs 3:9-10; Proverbs 11:24-25; Luke 6:37-38; 2 Corinthians 8:1-12; 2 Corinthians 9:6-12; and Matthew 6:19-21.

4. Ask yourself these questions

- How can we decrease our expenses in order to make a larger commitment?
- Are there any expenditures that we could delay?
- What amount would stretch our faith?

5. Dedicate your gift

When you have determined what God would have you give as a family to this campaign that is over and above your annual giving commitment, say a prayer of commitment similar to this:

“Father, everything we have comes from you. Teach us to be cheerful givers and trust you to meet our needs. Thank you for the indescribable gift of eternal life that your Son provided for us on the cross. We pray that you would take our gift and use it to reach more people with the grace of Jesus Christ. Thank you for what you are doing through Cross View. In Jesus’ name, Amen!”



Ways To Give

Our primary motivation for generous giving is to advance the cause of Christ, but a wise steward also takes advantage of the tax benefits associated with charitable contributions.

As you consider your campaign commitment, here are some giving options you might consider.

Cash Gifts

The simplest and easiest gift is cash. Your gift can be made through cash, personal checks, or cashier's checks. You can also give your campaign commitment through an automatic transfer from your checking or savings account by setting up a Simply Giving account.

Gifts of Appreciated Assets

Gifts of appreciated securities, stocks, and bonds could provide considerable tax advantages when transferred to Cross View before they are sold. If you have held your securities for more than one year, your gift may provide a two-fold tax benefit, creating an income tax deduction, as well as avoiding the capital-gains tax that would have been due on their sale. You also may give mutual funds, non-marketable stock or closely held stock.

Gifts of Real Estate

Giving personal residences, second homes, income-generating property, and vacant land may offer a wide variety of tax and other benefits. You may deduct the full fair market value of the property without having to pay capital gains on the appreciation, providing you have held the property for more than one year.

Charitable IRA Rollover

Taxpayers age 70 1/2 or older can make tax-free transfers of up to \$100,000 per year directly from their traditional or Roth IRA to Cross View. These gifts can be made without increasing your taxable income or withholding. Additionally, funds transferred from your IRA to Cross View will not subject your Social Security income to higher tax levels, and will count toward your minimum required distribution.

Gifts and Long-Range Planning

While it may not apply to this current campaign, as you consider your gift plans, please give thought to your long-range planning. Charitable gifts are often a significant part of effective retirement and estate planning. The simplest way to make a long-term gift to Cross View is to make a bequest of cash or property in your will or living trust that could help with future improvement projects. Upon your request, Cross View can provide the free services of an estate-planning consultant to help you; please contact the church office to arrange such a meeting.

These "Ways to Give" ideas are not legal or tax advice. Please seek the advice of competent professionals before implementing any of these suggestions.





**CROSS
VIEW**
LUTHERAN CHURCH

6645 McCauley Trail West, Edina, MN 55439

Phone: 952.941.1094

Web: www.crossview.net